

EVERGREEN EXPRESS

Everett Children's Adventure Garden Winter Activity Guide



NYBG

Scavenger Hunt

Look for these plants, animals or natural objects in the Garden. Tear the tab for each one that you find!

Tip: Roll this guide into a tube to create your own telescope to help you spot the details in nature.

Key Words:

Conifer: An evergreen tree or shrub that makes cones. There are more than 550 species of conifers that grow around the world. Examples of coniferous trees include Douglas fir, cypress, cedar, juniper, larch, pine, hemlock, redwood, spruce, and yew.

Cone: A plant part that holds seeds. The female cones are usually larger in size and hold seeds in their scales. The male cones are smaller and contain pollen. Some cones are hard, dry, and brown like pine, hemlock, and spruce. Some are colorful and fleshy, like juniper and yew.

Leaf: Many conifers have special leaves to survive the cold, dry winter. Needle-shaped leaves can hang on the branches as a clustered group or as a single needle. Scale-shaped leaves have flat, overlapping, tiny green structures like fish scales.

Branch: A part of a tree that grows out from the trunk or from a bough.



Signs of Animals in Winter

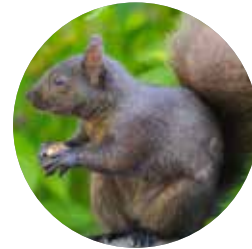
Which animal do you think ate which cone?



A mouse is a neat eater. It eats everything but the core of the cone.



Woodpeckers peck at a cone to get to the seeds.



Squirrels hold the cones with their paws! They like the scales and the seeds.



Answer: A. Woodpecker B. Mouse C. Squirrel



Everett Children's Adventure Garden Reopening after restoration in late Spring 2025!

Stop by the Pop Up this winter for train play and conifer discoveries.

1

2

3

4

5

6

7

8

Measure What You See



Instructions

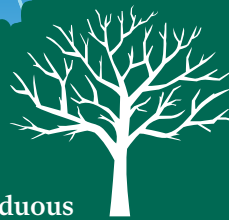
1. Gather a mix of food that is good for birds: can be a mix of dried fruit, slices of apple or orange, grapes, plain air-popped popcorn, peanuts in the shell.
2. Have an adult thread a thick needle with heavy thread or twine.
3. Push the needle and thread through the pieces of food like you're making a necklace!
4. Tie your tasty garland to a tree branch for your bird neighbors to enjoy!

DIY Tasty Birdfeeder Garland

Do you see leaves?

Trees are grouped into two categories: deciduous (dee-sid-U-us) and evergreen. A deciduous tree loses its leaves in the fall. Evergreens have leaves that remain on the branches all year long. As you explore the Ross Conifer Arboretum, notice the shapes of the silhouettes and unique features of both deciduous and evergreen trees.

Deciduous



Evergreen



Ross Conifer Arboretum

Use the colors on your toolbar. How many different colors do you see in the Garden today?



Can you find any animals making a home here?



Can you find the branches that look like arms? Pose with your favorite for a picture.



What patterns are you noticing on the bark of the deciduous trees?



Close your eyes. What sounds do you hear?



Find a cone. Use the ruler to measure its length. Compare the length to another cone you find and measure.



Compare the different types of evergreen leaves. Do you see scales or needles on the trees?



Match these colors in the Garden

